

# CMYK Color Charts

QUICK GUIDE TO USING THE CHARTS				
Yellow	Page Title	0	10	20
Cyan	Vertical Axis	30	40	50
Magenta	Horizontal Axis	60	70	80
Black	(see chart)	K value		

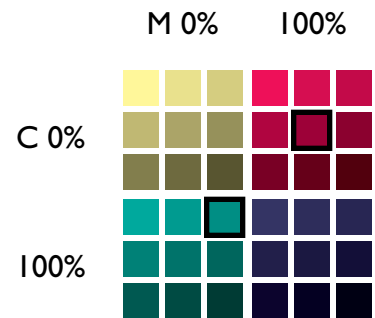
## Introduction

In attempting to tackle the *minor* difficulties associated with calibrating colors between my head, swatch book, monitor, printer, and press, I decided that I should at least be able to match colors between my printer and itself. Upon setting out to locate color charts that might be suited for this purpose, I found only Pantone® documents, and those were adjusted for specific output devices. Although the thought of creating 14,000 or so uniquely-colored squares seemed rather daunting, I figured that I and others would be able to make sufficient use out of them to justify the task (and don't think I didn't use shortcuts where I could).

## How to use these charts

My explanation will undoubtedly confuse you more than just trusting your intuition on this one, but here's how the charts are laid out. All of the Cyan, Magenta, Yellow, and Black components are represented in combinations of 10% increments from 0 to 100. Each of the eleven pages has a unique Yellow value across all swatches, as indicated at the top of the page. The pages have an eleven by eleven grid made up of 121 sets of nine swatches. Each set of nine has a unique CMY value, as indicated by the vertical axis (C), the horizontal axis (M), and the title of the page (Y). The black value is represented within the nine swatches from 0 to 80% only (see chart at top).

So, in this abbreviated example from the Yellow 50% page, the selected red square has a value of **C0 M100 Y50 K40**.  
The selected teal square has a value of **C100 M0 Y50 K20**.

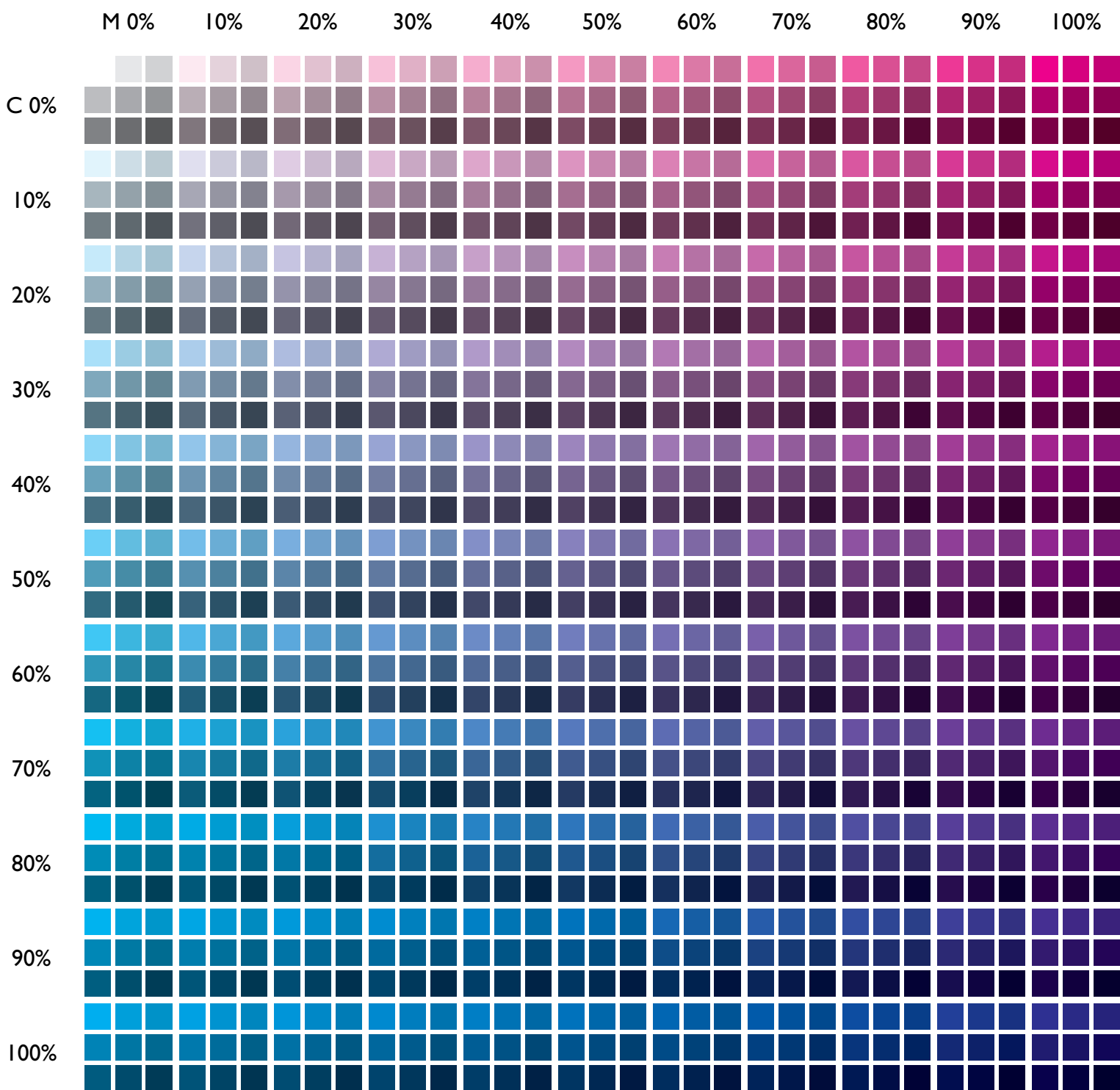


## Other stuff

Use these charts as you see fit, but I do not make any guarantees or assume responsibility for how they will behave with your technology. If you find them useful or invaluable and would like to contribute to my eating or rent funds, please send what you feel they're worth. I can also provide the original EPSF documents. Enjoy...

Scott Tesler  
945 Taraval Street, #307  
San Francisco, CA 94116  
email [scott@stun.com](mailto:scott@stun.com)

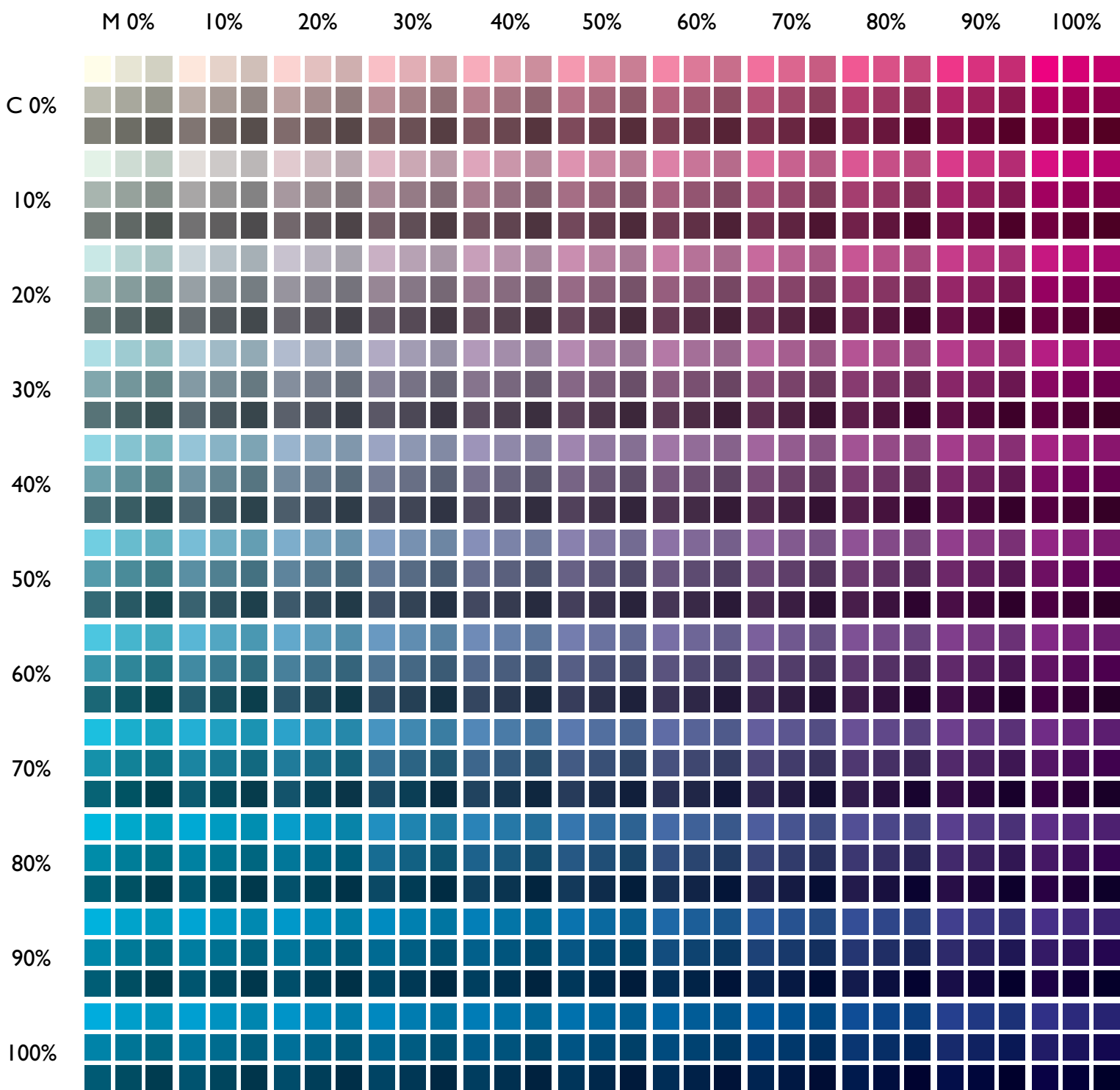
# Yellow 0%



K

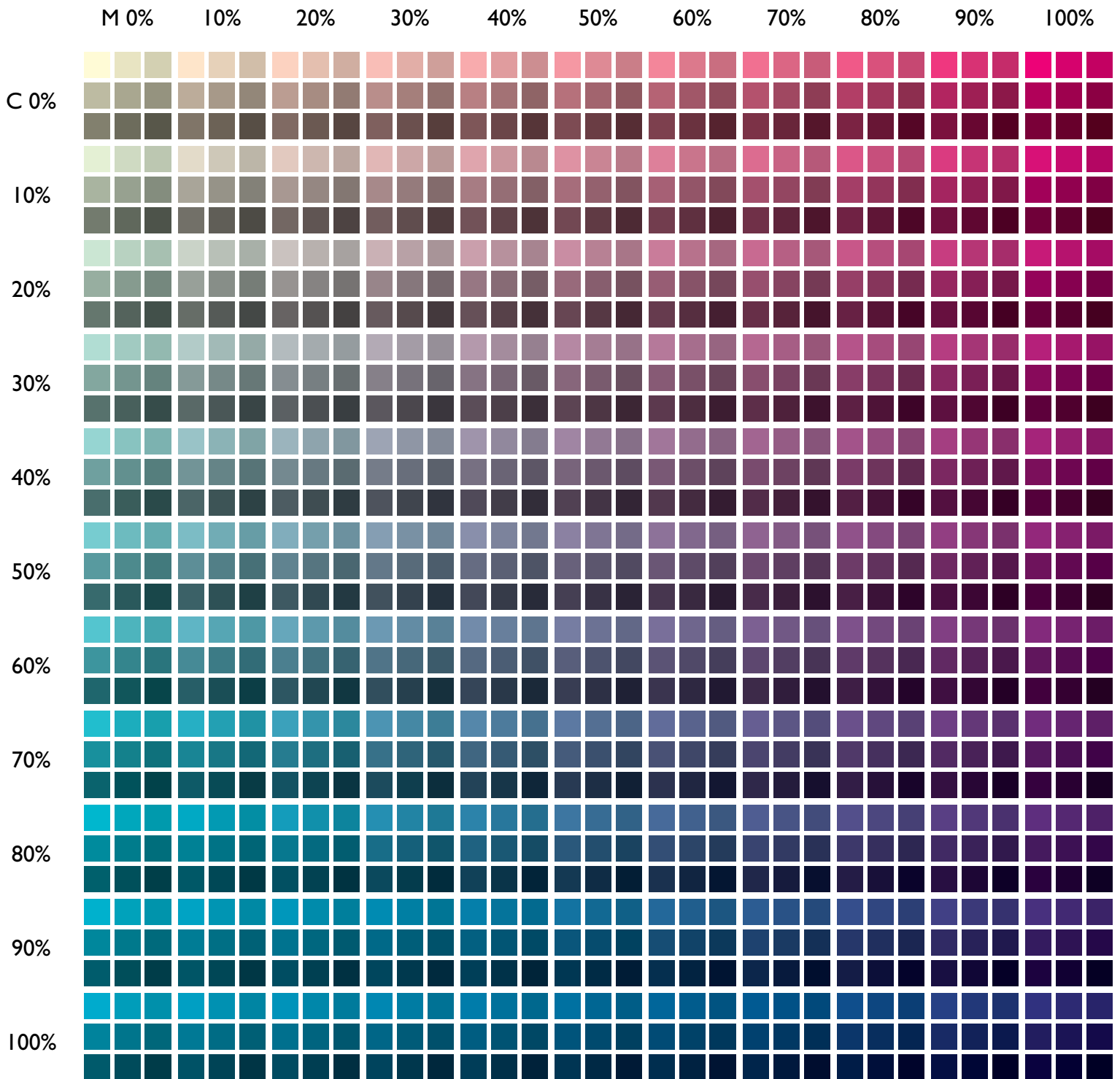
0	10	20
30	40	50
60	70	80

# Yellow 10%



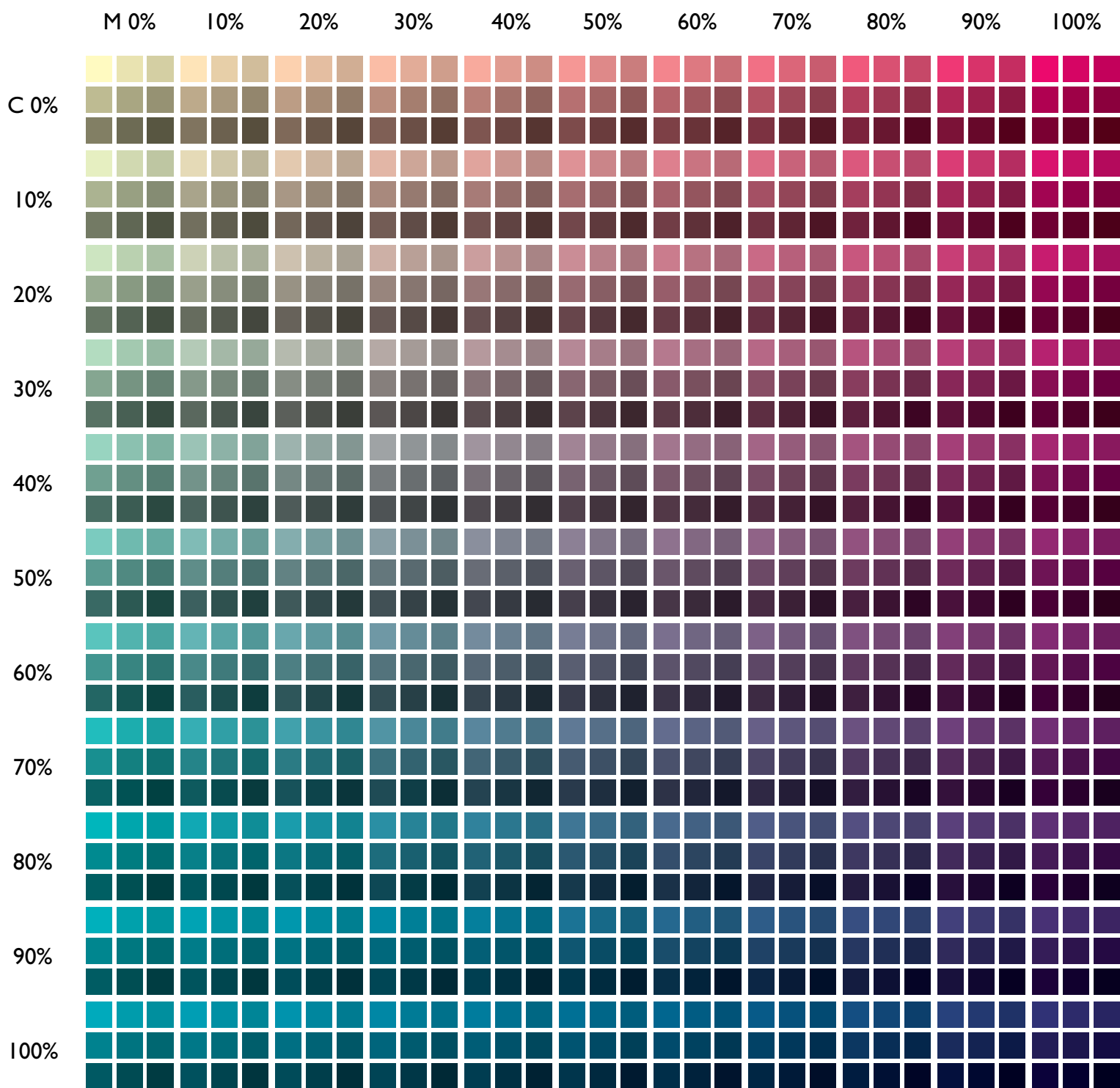
K  
0 10 20  
30 40 50  
60 70 80

# Yellow 20%

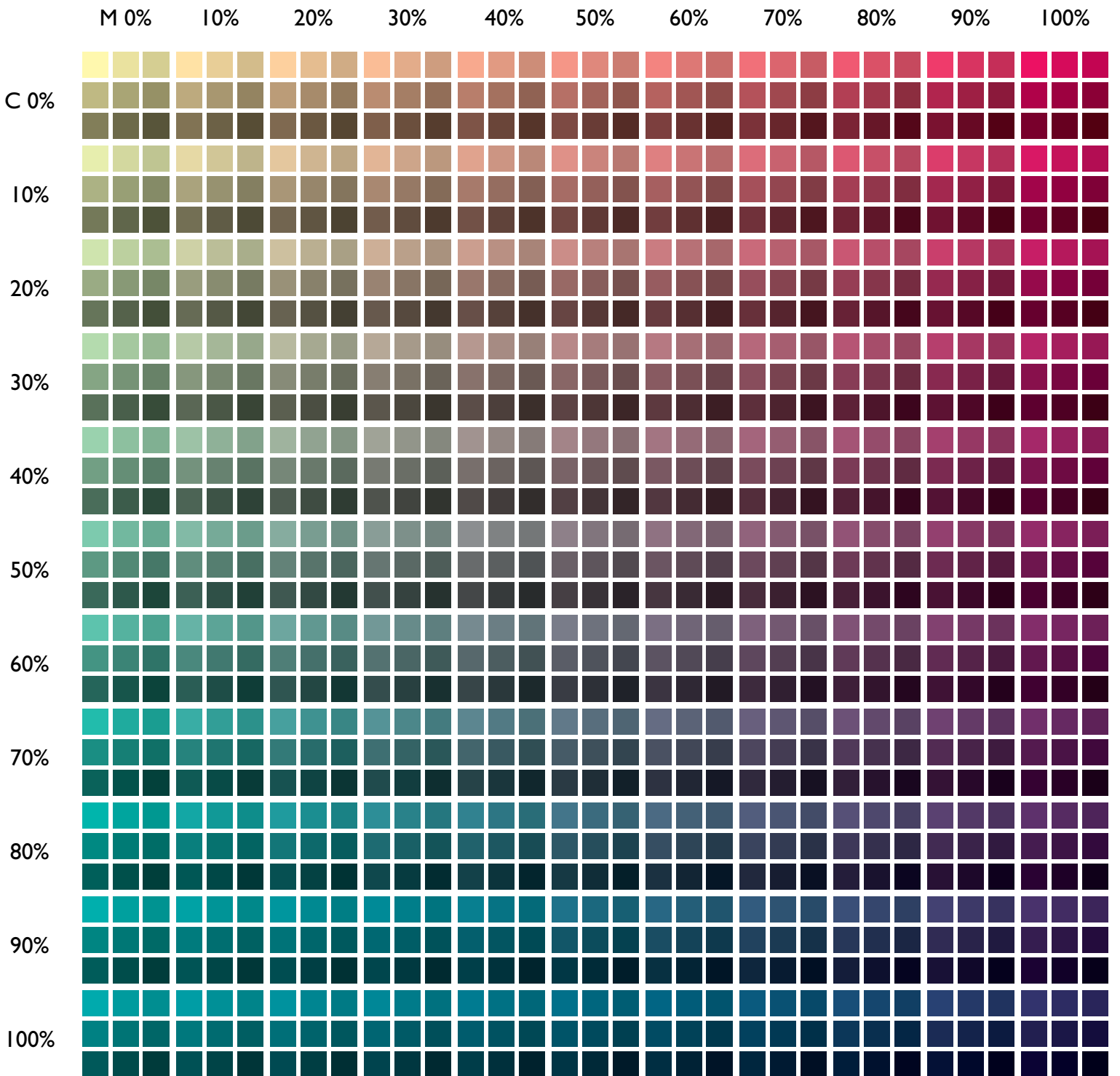


	0	10	20
K	30	40	50
	60	70	80

# Yellow 30%

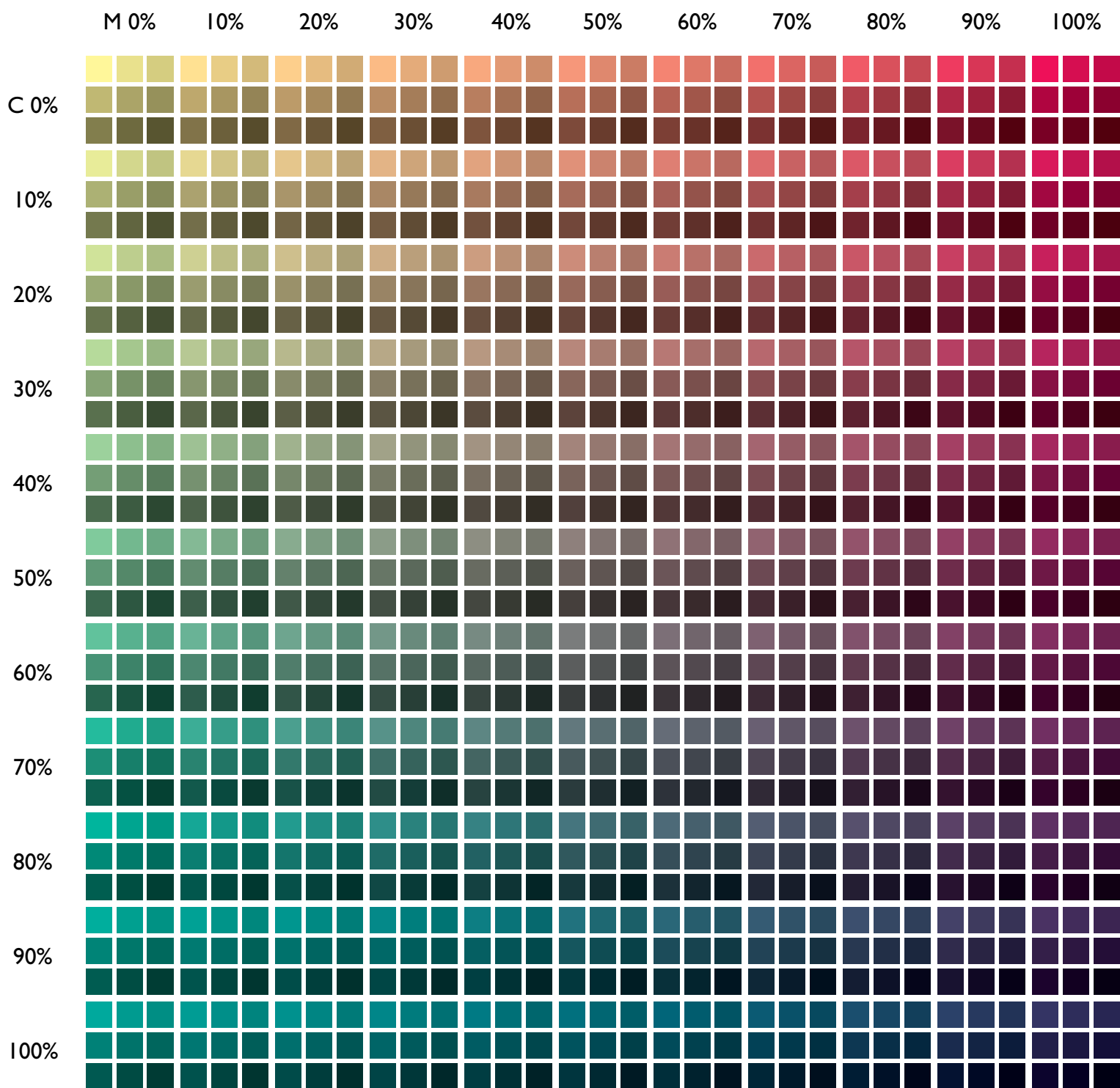


# Yellow 40%



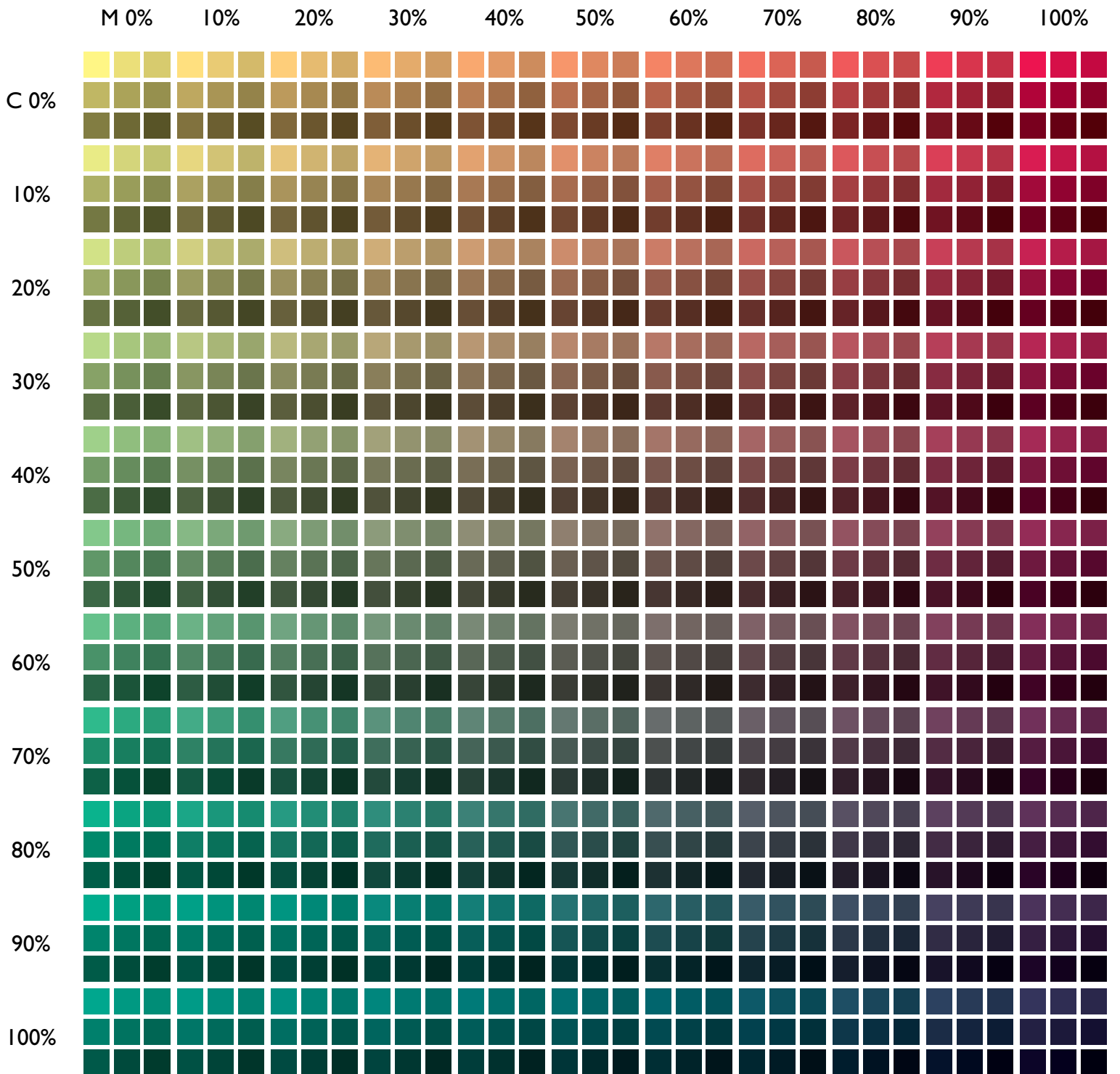
K 0 10 20  
30 40 50  
60 70 80

# Yellow 50%



K  
0 10 20  
30 40 50  
60 70 80

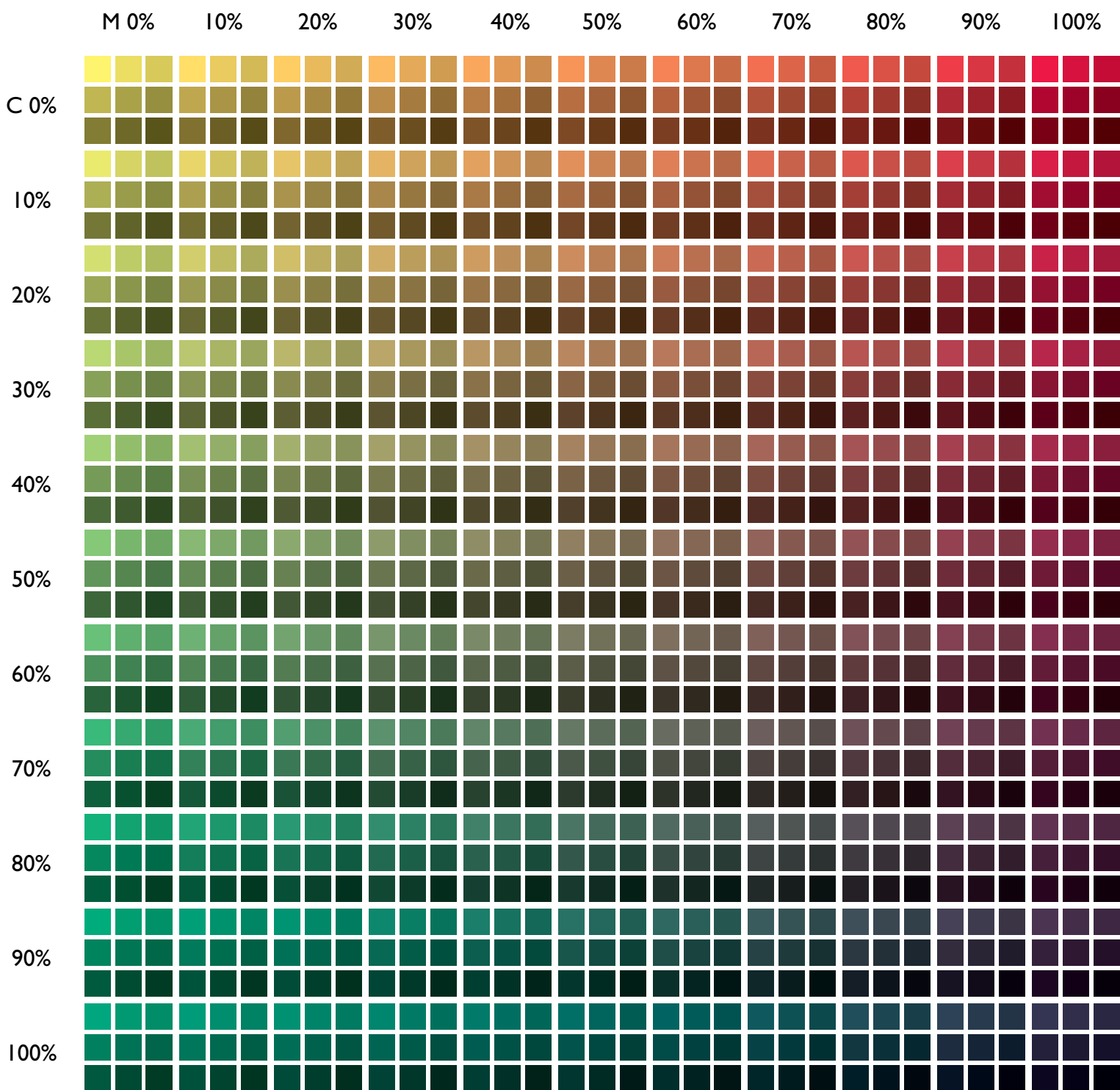
# Yellow 60%



	0	10	20
K	30	40	50
	60	70	80

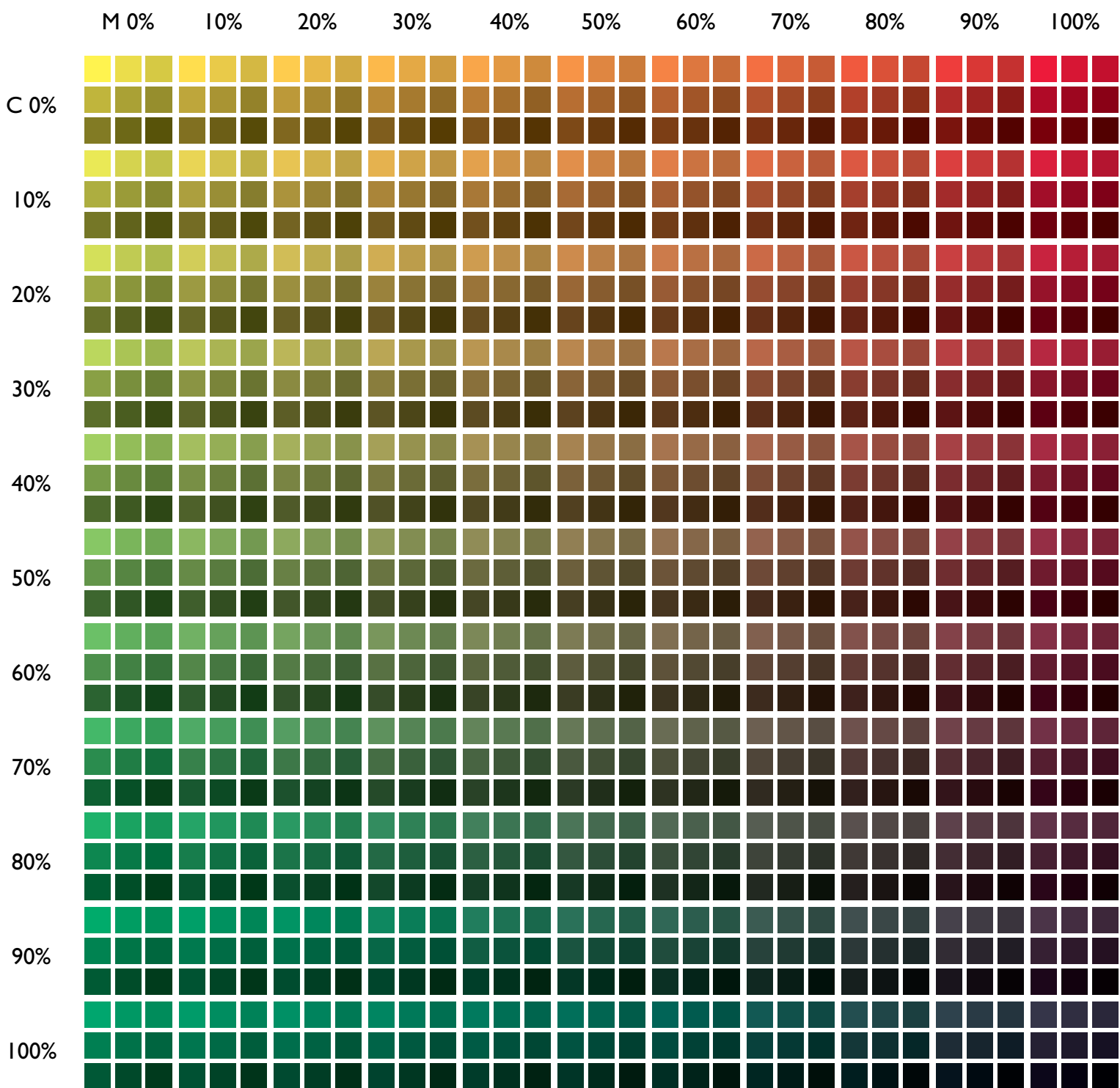


# Yellow 70%



K  
0 10 20  
30 40 50  
60 70 80

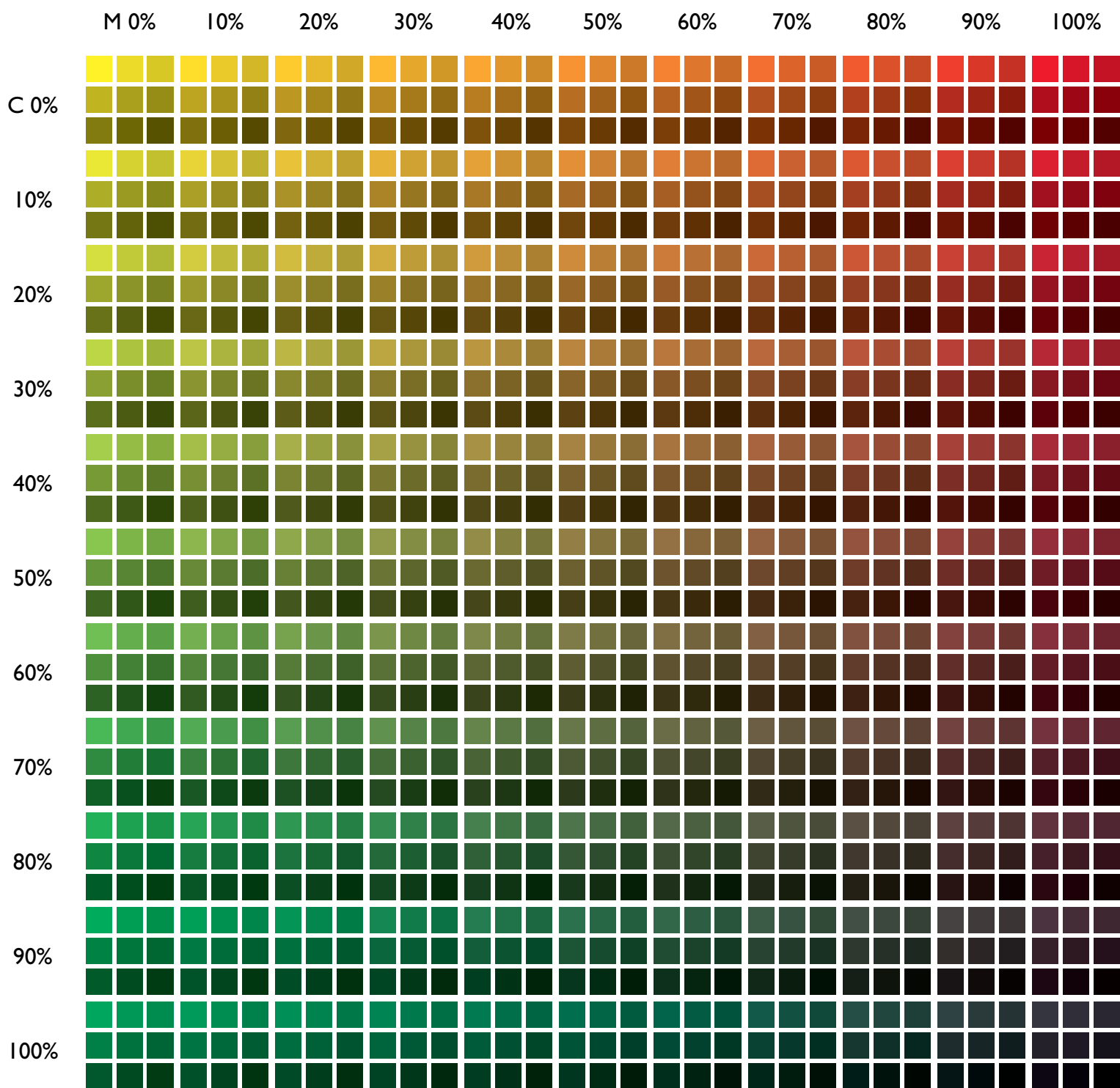
# Yellow 80%



K

0	10	20
30	40	50
60	70	80

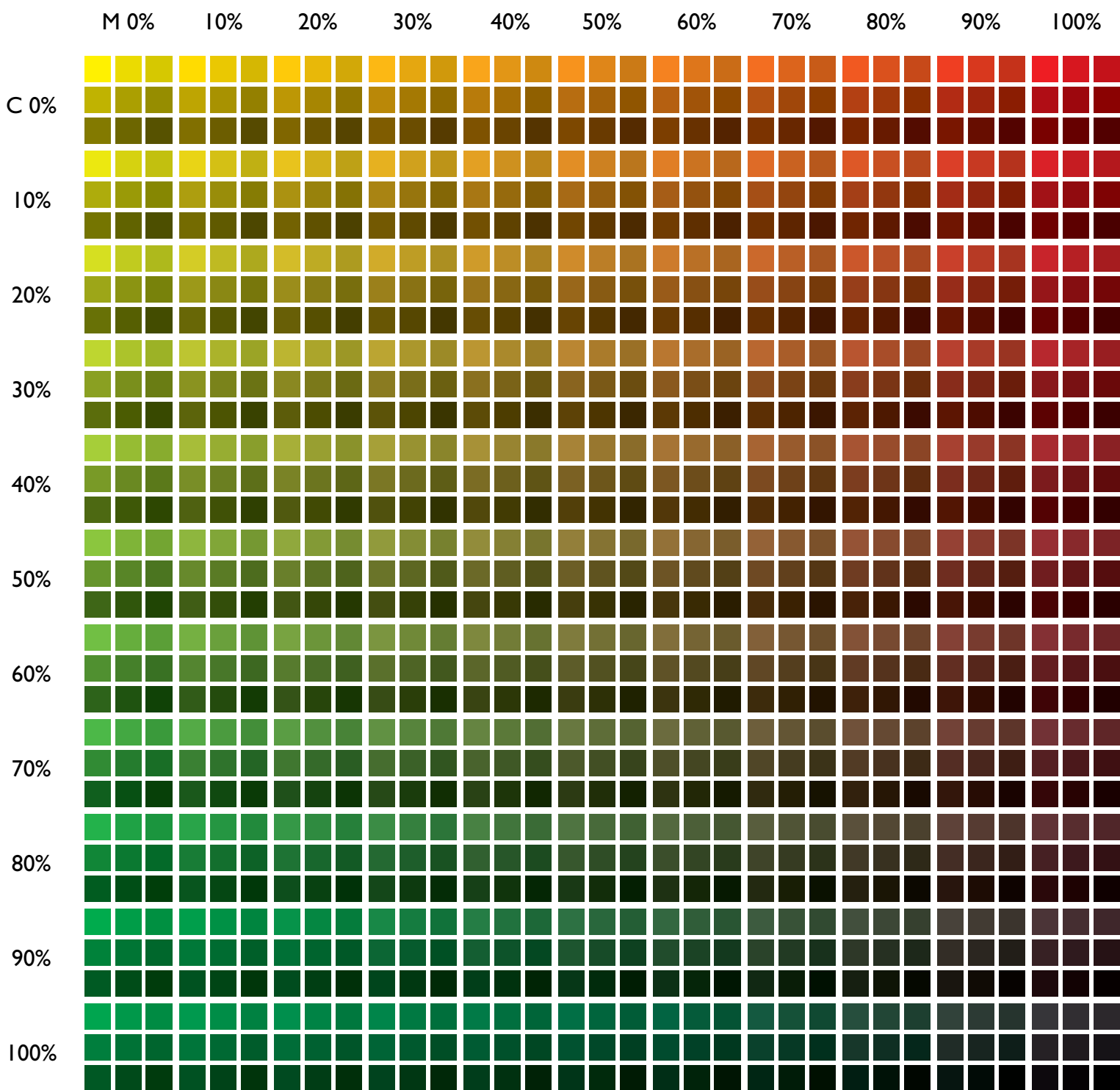
# Yellow 90%



K

0	10	20
30	40	50
60	70	80

# Yellow 100%



	0	10	20
K	30	40	50
	60	70	80